

24<sup>th</sup> Street Bridge Over Portage Creek  
Kalamazoo County Road Commission  
Project Information

Existing Structure:

- Constructed in 1949
- 70' span over Portage Creek
- Steel beams supported by abutments on each side and a center pier in the channel
- Clear width is approximately 36' between railing
- Existing deck and beams need to be replaced before deterioration progresses
- Existing abutments and pier have deteriorated concrete that needs to be repaired

Proposed Work:

Bridge rehabilitation

- Remove existing bridge deck, railings, beams and portions of abutments and pier.
- Form and pour new caps for abutments and pier
- Repair deteriorated concrete in abutments and pier
- Place scour protection (stone rip rap) at abutments
- Construct tie back system with piling for abutments
- Plug failing drain holes
- Place new galvanized steel beams, 70' span
- Pour new reinforced concrete deck
- Pour new concrete barrier with railing for a clear width of 40'

Road Approach Reconstruction (200' each side of bridge)

- Remove existing pavement
- Excavate and grade road base including sand and gravel
- Install downspouts (pipes) to convey storm water from bridge and road
- Pave asphalt surface
- Place gravel shoulders
- Construct guardrail
- Restore disturbed areas with topsoil and seed

Schedule:

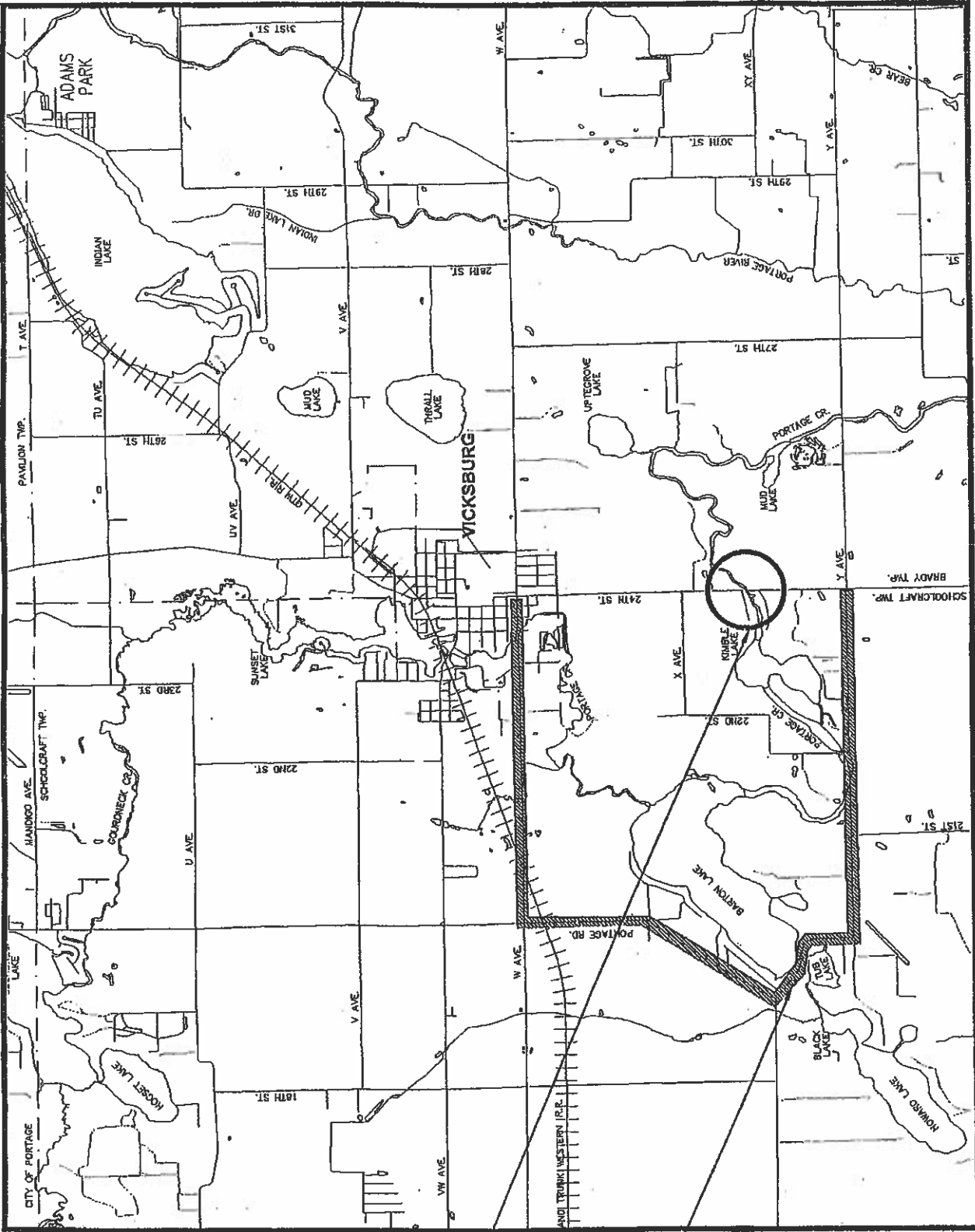
Work to start the week of April 19 and will be completed in August

Traffic Control:

Traffic to be detoured while bridge is out, the route will include Y Ave., Portage Rd., and W Ave., see attached map.

Project Funding:

- 95% Michigan Local Bridge Funds
- 5% Kalamazoo County Road Commission



POB - STA 23+00.00  
 POE - STA 28+25.00  
 LENGTH - 525'

PROJECT  
 LOCATION

DETOUR  
 ROUTE

